

LOW CROPS



ALBUZ catalog 2022

Specific body dimensions: 11 mm

EUROPE

Drift reduction flat spray nozzle

ADE 110°



European Colour code

SPECIFIC CHARACTERISTICS

- > Operates from 2 bar.
- > Flow rate characteristics, body size and color code meet ALBUZ® standards.
- > Drift reduction nozzle reduces by 50% the number of small droplets (<100µm).
- > Easy to dismantle and clean.
- > **Minimum height boom recommended: 50/60 cm.**
- > **Recommended pressure: 2 bar.**



Easy to dismantle and clean

MAIN CHARACTERISTICS

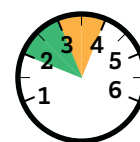
- > Pink ALBUZ® ceramic orifice (excellent precision and high wear resistance).
- > Flat fan pattern angle 110°: spray overlap required to ensure uniform distribution on the ground.
- > Designed for all types of nozzle holders using caps which accept nozzles measuring 11 mm across flats.
- > Drift reduction.

FLOW RATE CHART

Colour	Mesh	Pressure (bar)	Drop	l/mn	Liters / hectare - Nozzle spacing: 50 cm								
					8 km/h	10 km/h	12 km/h	14 km/h	16 km/h	18 km/h	20 km/h	22 km/h	24 km/h
BROWN	100	2	M	0,35	53	42	35	30	26	23	21	19	18
		2,5	M	0,39	59	47	39	33	29	26	23	21	20
		3	M	0,43	65	52	43	37	32	29	26	23	22
		3,5	F	0,47	71	56	47	40	35	31	28	25	23
		4	F	0,50	75	60	50	43	38	33	30	27	25
YELLOW	100	2	M	0,49	74	59	49	42	37	33	30	27	25
		2,5	M	0,55	83	66	55	47	42	37	34	31	28
		3	F	0,61	91	73	61	52	45	41	37	33	31
		3,5	F	0,65	98	79	65	56	49	44	40	36	33
		4	F	0,70	105	84	70	60	53	47	42	38	35
ORANGE	50	2	M	0,69	104	83	69	59	52	46	41	38	35
		2,5	M	0,77	116	93	77	66	58	52	47	43	39
		3	F	0,85	127	102	85	73	64	57	51	46	43
		3,5	F	0,92	138	110	92	79	69	61	55	50	46
		4	F	0,98	147	118	98	84	74	65	59	53	49
RED	50	2	C	0,99	148	119	99	85	74	66	59	54	50
		2,5	M	1,11	166	133	111	95	83	73	66	60	55
		3	M	1,21	182	145	121	104	91	81	73	66	61
		3,5	M	1,31	196	157	131	112	98	87	79	71	66
		4	M	1,40	210	168	140	120	105	93	84	76	70
GREEN	50	2	C	1,40	210	168	140	120	105	93	84	76	70
		2,5	M	1,57	235	188	157	134	117	104	94	85	78
		3	M	1,71	257	206	171	147	129	114	103	93	86
		3,5	M	1,85	278	222	185	159	139	123	111	101	93
		4	M	1,98	297	238	198	170	149	131	118	107	99

APPLICATIONS

All types of treatments (herbicides, fungicides, insecticides...).



2-4 bar



110°

