

LOW CROPS



ALBUZ

catalog 2022

Drift reduction flat spray nozzle

ADI 110°

Specific body dimensions: 8 mm

ISO



ISO colour code

SPECIFIC CHARACTERISTICS

- > Flow rate characteristics, body size and colour code meet international ISO standard.
- > Drift reduction nozzle reduces by 50% the number of small droplets (<100µm).
- > Easy to dismantle and clean.
- > **Minimum height boom recommended: 50/60 cm.**
- > **Recommended pressure: 2 bar.**



Easy to dismantle and clean

MAIN CHARACTERISTICS

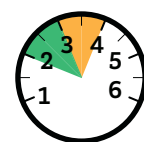
- > Pink ALBUZ® ceramic orifice (excellent precision and high wear resistance).
- > Flat fan pattern angle 110°: spray overlap required to ensure uniform distribution on the ground.
- > Designed for all types of nozzle holders with caps which accept nozzles to ISO dimensions (8 mm across flats).
- > Drift reduction.

FLOW RATE CHART

Colour	ISO CODE	Mesh	(bar)	l/min	Liters / hectare - Nozzle spacing: 50 cm												
					6 km/h	7 km/h	8 km/h	9 km/h	10 km/h	12 km/h	14 km/h	16 km/h	18 km/h	20 km/h	22 km/h	24 km/h	
ORANGE	ADI 11001	100	2	M	0,32	64	55	48	43	38	32	27	24	21	19	18	17
			2,5	M	0,36	72	62	54	48	43	36	31	27	24	22	20	19
			3	M	0,40	80	69	60	53	48	40	34	30	27	24	22	20
			3,5	F	0,43	86	74	65	57	52	43	37	32	29	26	23	22
GREEN	ADI 110015	100	2	M	0,49	98	84	74	65	59	49	42	37	33	29	27	25
			2,5	M	0,54	108	93	81	72	65	54	46	41	36	32	30	28
			3	F	0,60	120	103	90	80	72	60	51	45	40	36	33	30
			3,5	F	0,64	128	110	96	85	77	64	55	48	43	38	35	33
YELLOW	ADI 11002	100	2	M	0,66	132	113	99	88	79	66	57	50	44	40	35	33
			2,5	M	0,73	146	125	110	97	88	73	63	55	49	44	40	37
			3	F	0,80	160	137	120	107	96	80	69	60	53	48	44	40
			3,5	F	0,86	172	147	129	115	103	86	74	65	57	52	47	43
PURPLE	ADI 110025	50	2	M	0,82	164	141	123	109	98	82	70	62	55	49	45	41
			2,5	M	0,91	182	156	137	121	109	91	78	68	61	55	50	46
			3	F	1,00	200	171	150	133	120	100	86	75	67	60	55	50
			3,5	F	1,08	216	185	162	144	130	108	93	81	72	65	59	54
BLUE	ADI 11003	50	2	C	0,98	196	168	147	131	118	98	84	74	65	59	53	49
			2,5	M	1,10	220	189	165	147	132	110	94	83	73	66	60	55
			3	M	1,20	240	206	180	160	144	120	103	90	80	72	65	60
			3,5	M	1,30	260	223	195	173	156	130	111	98	87	78	71	65
RED	ADI 11004	50	2	C	1,31	262	225	197	175	157	131	112	98	87	79	71	66
			2,5	M	1,46	292	250	219	195	175	146	125	110	97	88	80	73
			3	M	1,60	320	274	240	213	192	160	137	120	107	96	87	80
			3,5	M	1,73	346	297	260	231	208	173	148	130	115	104	94	87
			4	M	1,85	370	317	278	247	222	185	159	139	123	111	101	93

APPLICATIONS

All types of treatments (herbicides, fungicides, insecticides...).



2-4 bar



110°

