



## Rogers Sprayers Inc.

141 - 105th Street East  
Saskatoon, SK S7N 1Z2  
Canada

Phone: (306) 975-0500  
Fax: (306) 975-0499  
Email: [info@rogerssprayers.com](mailto:info@rogerssprayers.com)  
Web: [www.rogerssprayers.com](http://www.rogerssprayers.com)

# FY325

## Heavy Duty Farm Yard Sprayer

(3 Nozzle, 25 USG Tank)



## Assembly, Parts and Operator's Manual

Version FY-1405

# Table of Contents

Minimize Chemical Drift .....	3
Nozzles .....	3
Trouble Shooting.....	3
Cleaning.....	3
Winterizing .....	3
Calibration.....	3
Application Rate Tables .....	4
Assembly Instructions .....	5
General Assembly Drawing.....	8
Plumbing Assembly Drawing .....	9
ORC Assembly Drawing .....	10
Electrical Assembly Drawing.....	11

Visit our website, [www.rogerssprayers.com](http://www.rogerssprayers.com), for additional models.

## **Minimize Chemical Drift**

The **Windfoil** sprayer has been designed in wind tunnels to control airflow around and behind the sprayer to minimize drift, allowing safe spraying in windy conditions. Drift can blow off a field after it has been sprayed, especially in high winds. Reasonable caution should be taken, in order to spray effectively and safely. **For maximum drift control, keep curtain in contact with the canopy to ensure a seal to it.**

## **Nozzles**

The FY325 and FY425 are equipped with 80° spray tips respectively, spaced at 16". Tips are mounted with self-aligning ¼ turn caps for easy removal or change.

## **Trouble Shooting**

If dripping occurs, caused by the diaphragm not seating properly, the diaphragm may be hard, cracked, or the seating may be damaged.

## **Cleaning**

Sprayers need to be cleaned to prevent corrosion, to prevent cross contamination of chemicals, and to prevent any grit or solids in the liquid that will reduce pressure. Flush with clean water, preferably after each day's operation. Rinse the outside of the sprayer.

## **Winterizing**

After the sprayer is thoroughly cleaned, put 2 to 5 quarts of rust inhibitor or antifreeze in the tank for final system flushing to help prevent corrosion.

## **Calibration**

To calibrate, operate the sprayer at the desired pressure. Collect the output from each nozzle for 60 seconds, using an accurate measuring cup. Record the output from each nozzle. Replace nozzles that are more than 5% above or below the average reading, or have a visibly distorted spray pattern.

Run a speed test in the area to be sprayed, with a full tank. The sprayer must be at operating speed before starting the test run. To determine the speed, mark off a distance as found on one of the tables below. Spray this distance, carefully noting and recording the time to cover the distance. The actual speed can be found for the specific distance traveled and time to travel, using the table.

Table 1: Time in seconds to travel a distance of:

Mph	10'	25'	50'	100'
2.5	2.7	6.8	13.6	27.3
3	2.3	5.7	11.4	22.7
4	1.7	4.3	8.5	17.0

Table 2: Time in seconds to travel a distance of:

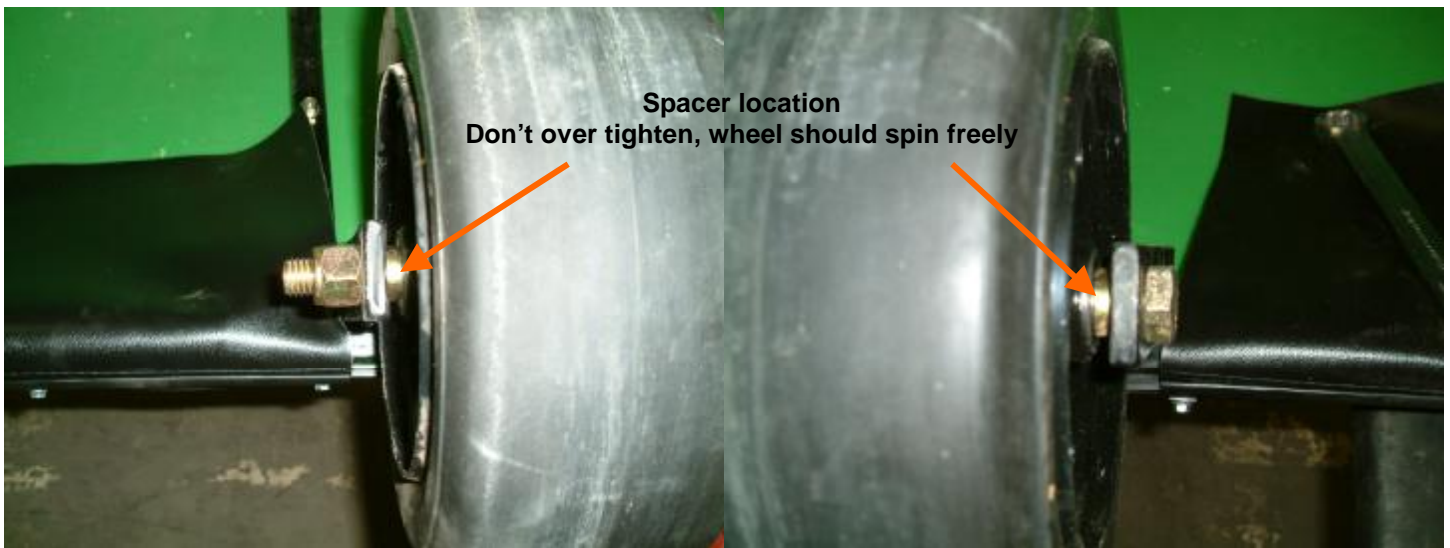
Km/h	10m	25m	50m	100m
3	12.0	30.0	60.0	120.0
4	9.0	22.5	45.0	90.0
5	7.2	18.0	36.0	72.0

### Table 3: Acceptable Tip Sizes for Standard and High Flow Pumps

Table 4: Nozzle Application Rates for 16" (40cm) Spacing

FOLLOWING TIPS ARE FOR HIGH FLOW PUMP ONLY

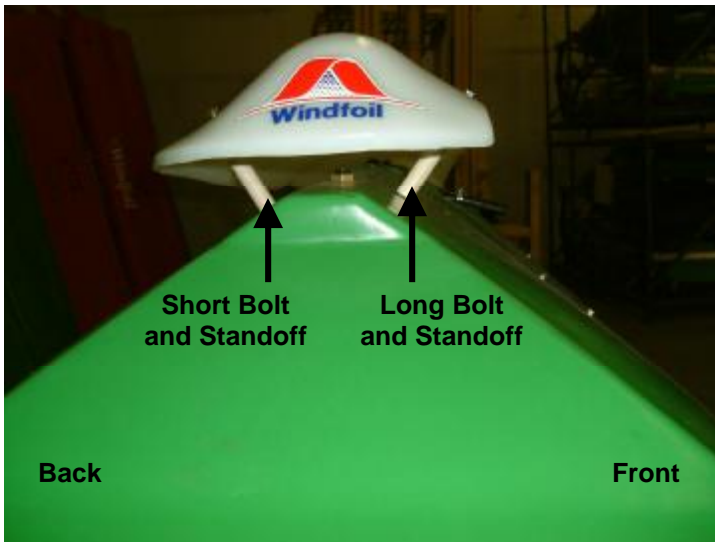
Rogers Sprayers Inc.



**Figure 1: Wheel assembly**

**Figure 2: Wheel assembly**

First take components out of box. With boom upside down on saw horses or table install wheel assemblies. Return to upright position and mount airfoil as shown in figure 3. Take pressure gauge out of box and install on flow monitor. Position flow monitor vertically as shown in figure 4 and connect feed hose. \*\*\* If installing a wand kit see figures 11-16 on pages 10 and 11\*\*\*



**Figure 3: Airfoil assembly**



**Figure 4: Flow monitor and pressure gauge**



**Figure 5: Mounting hitch on boom**  
Rogers Sprayers Inc.



**Figure 6: Mount tank and secure with strap**  
Toll Free 1-888-975-8294 [www.rogerssprayers.com](http://www.rogerssprayers.com)





Figure 7: Attaching return line from Pressure Regulator



Figure 8: Attaching feed line from tank to valve



Figure 9: Attaching nozzle feed hose to flow monitor



Figure 10: Main plumbing Assembly

**\*\*\*The following instructions and pictures are for the installation of the wand kit\*\*\***

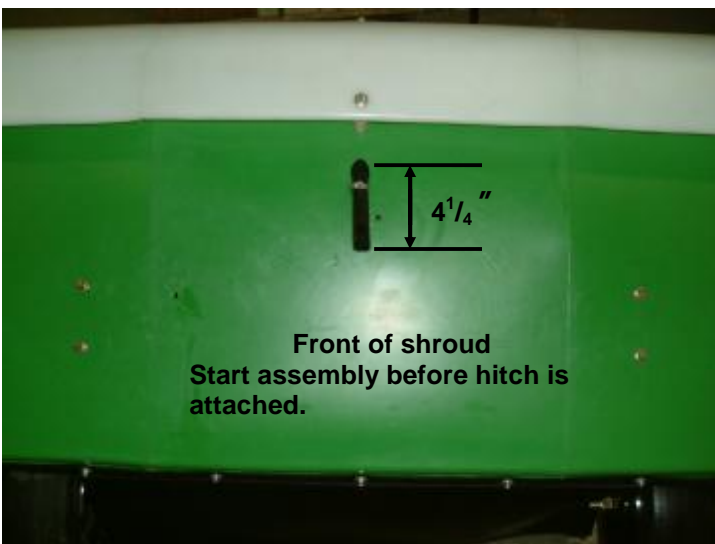


Figure 11: Boom feed hose

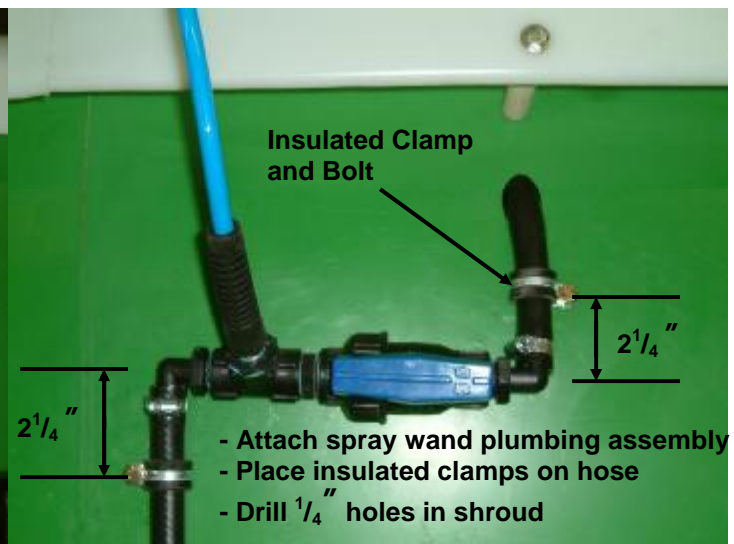


Figure 12: Spray wand plumbing assembly

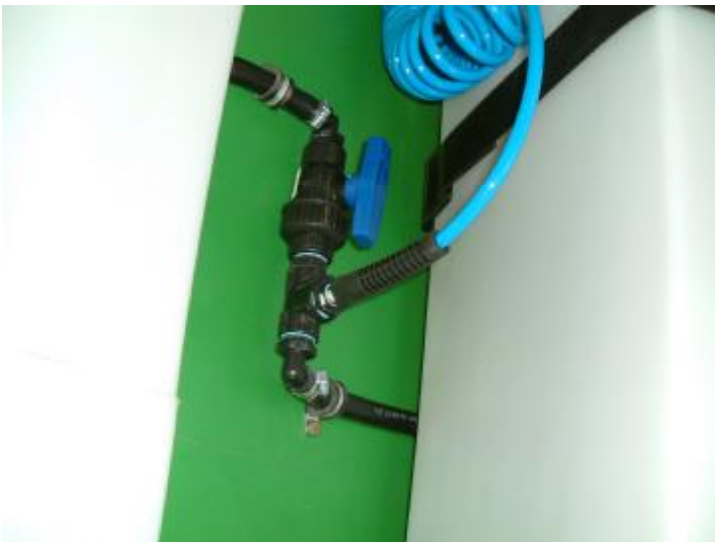


**Figure 13: Spray wand holding clamps**



**Figure 14: Spray wand holding clamps**

Use existing airfoil mounting bolt to attach insulated clamp for holding spray wand. Position wand so tip is clear from the front of the boom and drill hole for second holding clamp. Now continue with the rest of the assembly from figure 4.



**Figure 15: Assembled FY 425 with wand kit**

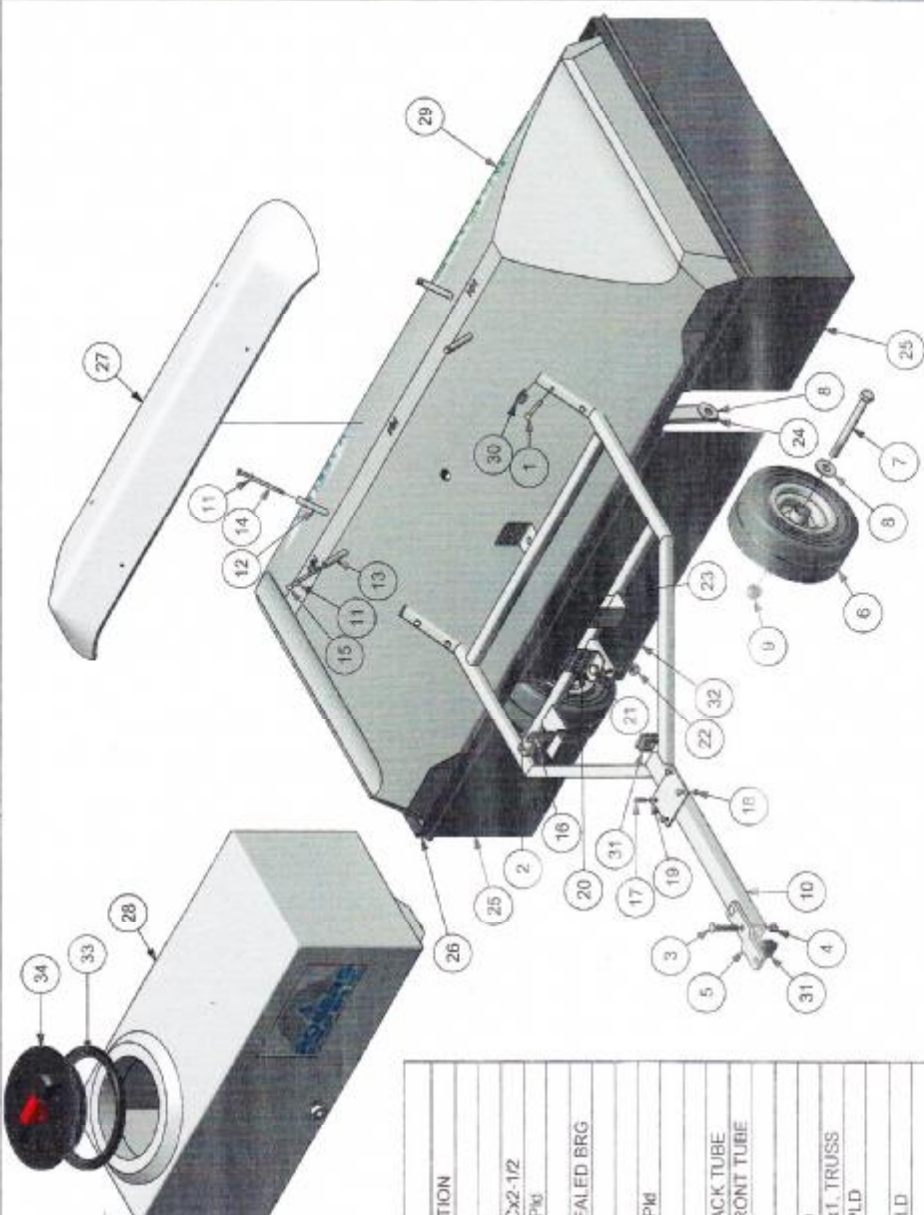


**Figure 16: Assembled FY 425 with wand kit**

Adjust spray wand plumbing assembly if necessary to ensure free movement of valve and wand hose.

**Note: Both FY 425 and FY 325 models use the outer front stand off bolt to mount the clamp for the spray wand**

# General Assembly



**PART # 15424**  
SCREWS FOR FASTENING TANK LID TO TANK  
6 PIECES REQ'D

**PART # 13258**  
OPTIONAL STRAINER BASKET FOR TANK

**NOTE: 4 FEET OF 2" BLACK WEBBING USED TO HOLD DOWN TANK, BULK PART # 05575**

ITEM	QTY	PART#	DESCRIPTION
1	4	00966	BOLT, 1/4NCx2.5, PLD
2	9	00066	NUT NYLOCK 1/4" PLD
3	2	13393	BOLT CARRIAGE 3/8NCx2-1/2
4	2	00966	NUT, NYLOCK, 3/8NC, PLD
5	1	14229	HITCH TAB, FY
6	2	00920	WHEEL ASSY 5/8"ID SEALED BRG
7	2	01166	BOLT, 5/8"x6.5", PLD
8	4	00960	WASHER, 5/8", PLD
9	2	01051	NUT, NYLOCK, 5/8NC, PLD
10	1	14878	HITCH FY 25 USGal
11	8	01157	WASHER FLAT, 1/4"
12	2	14843	AIRFOIL STANDOFF BACK TUBE
13	2	14844	AIRFOIL STANDOFF FRONT TUBE
14	2	05415	BOLT, 1/4NCx4, PLD
15	2	14845	BOLT, 1/4NCx4.5, PLD
16	1	05409	BOLT, 1/4NCx1.75, PLD
17	4	07157	SCREW/MACH. #10-24x1, TRUSS
18	4	01153	NUT, NYLOCK #10-24 PLD
19	4	01183	WASHER FLAT #10
20	1	05103	STRAP HOLDER STL PLD
21	1	00967	BOLT, 1/2"x2.5", PLD
22	1	00963	NUT, NYLOCK, 1/2NC, PLD
23	2	14509	BOLT M6-1.00 x 12MM
24	1	14220S	FRAME, FY1000
25	1	14230	FLEXI-SHIELD 10.5Wx150", FY325
26	1	14231	FLEXI-SHIELD HANGER, FY325/FY1000
27	1	01500	AIRFOIL 48" WFWGTE/GFWF/BB/FY
28	1	14833FY	TANK RECT 25 USG, FARM YARDER
29	1	15234FY	SHROUD FY 3 NOZ GREY
30	2	01056	PLUG, 1" SQ. PLASTIC
31	2	01057	PLUG, TUBE SQ. PLASTIC 1.5"
32	1	15427	FLEXI-SHIELD 10.5Wx30", FY
33	1	15400	LID TANK SEAL 8"
34	1	01350	LID TANK VENTED 8" W/RING

ROGERS SPRAYERS INC.

DATE CREATED: 12/02/2012

PROJECT: FRAME ASSY FY325

DWG NO: 14508

SCALE: BEST FIT

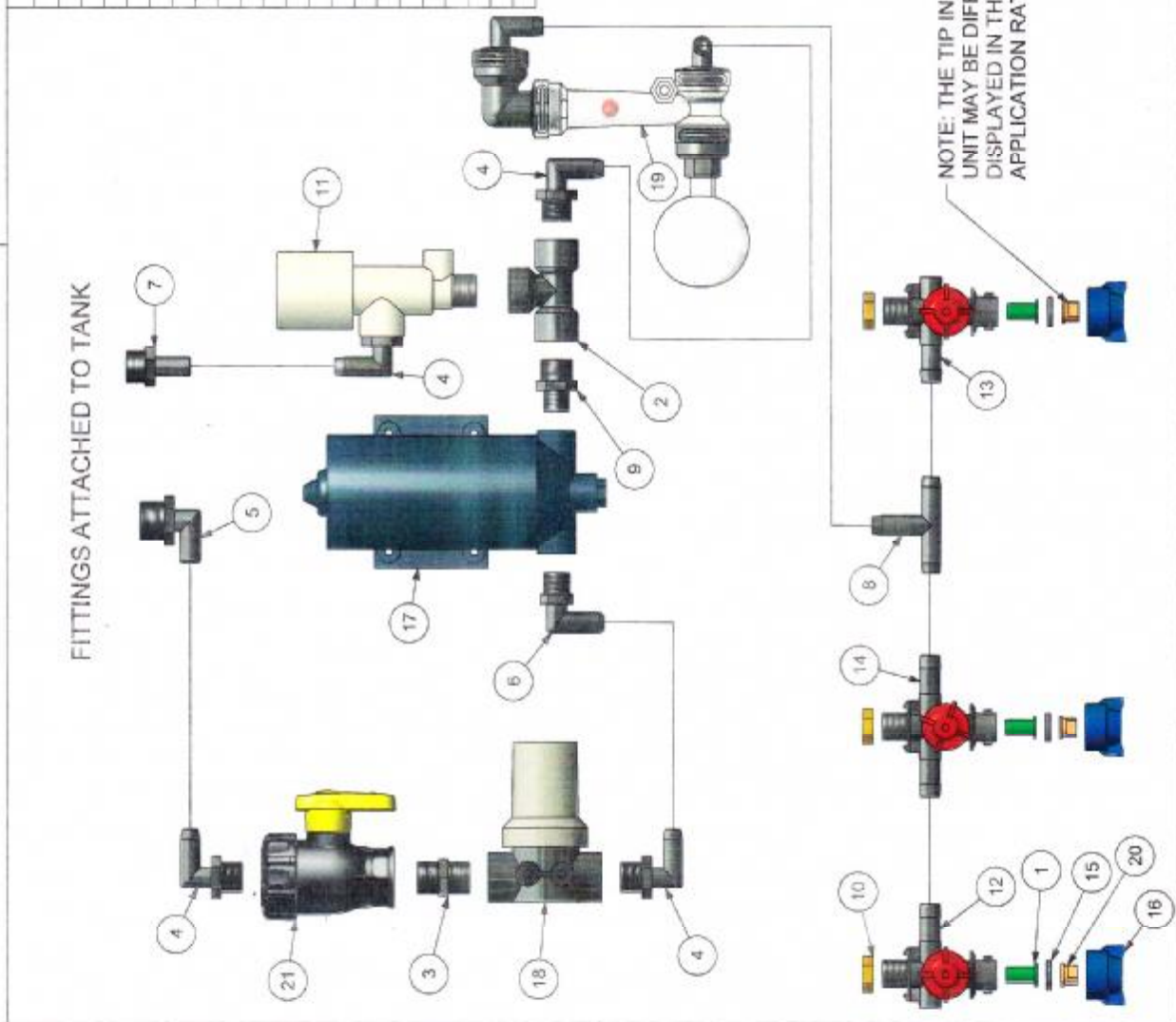
MATERIAL: A

SIZE: A



# Plumbing Assembly

**FITTINGS ATTACHED TO TANK**

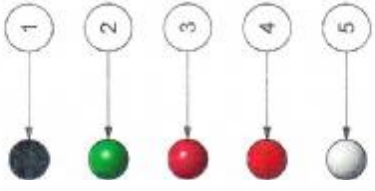
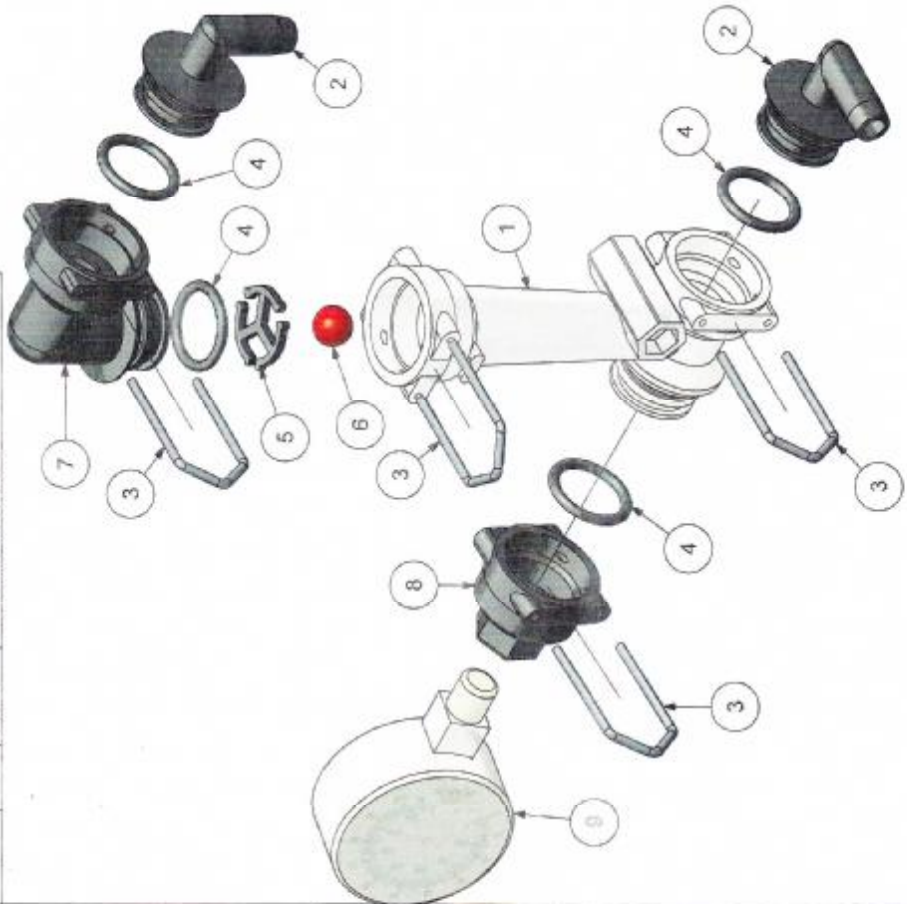


PARTS LIST		
ITEM	QTY	PART DESCRIPTION
1	3	SCREEN, TIP 100 MESH
2	1	FTG POLY TEE 1/2NPT F/F
3	1	01085 FTG POLY NIPPLE 1/2MNPT/MNPT
4	4	01235 FTG POLY ELB 1/2MNPTx1/2HB
5	1	01243 FTG POLY ELB 3/4MNPTx1/2HB
6	1	01247 FTG POLY ELB 3/8MNPTx1/2HB
7	1	05527 FTG POLY ADPT 1/2MNPTx1/2HB
8	1	05816 FTG NYL TEE 1/2HB/HB/HB
9	1	12357 FTG POLY NIPPLE 3/8 x1/2MNPT
10	3	12362 NUT BRASS, 1 1/16"
11	1	12818 REGULATOR PRESSURE NYLON 1/2"
12	1	14281 NOZZLE BODY TJ15R
13	1	14282 NOZZLE BODY, TJ15L
14	1	14283 NOZZLE BODY, TJ15T
15	3	14284 SEAL NOZZLE CAP, TJ
16	3	14288 CAP TJ-NB BLUE
17	1	14498 PUMP 12V DEL 7612 SERIES
18	1	14508 STRAINER LINE 1/2 COMPACT W/MT
19	1	14881 FLOW KIT FY325/FY425
20	3	15287 TIP AXI-80015 GRN
21	1	01249 VALVE BALL POLY 1/2 FNPT

DRAWN: MERVIN BUNSGO		ROGERS SPRAYERS INC.	
DATE: 10/20/02	TITLE: PLUMBING ASSY FY325		
DESIGNER: FREDERICK	CWG NO: 14007		
SCALE: 1/4" = 1"	MATERIAL: A		

Flow Kit - #14881

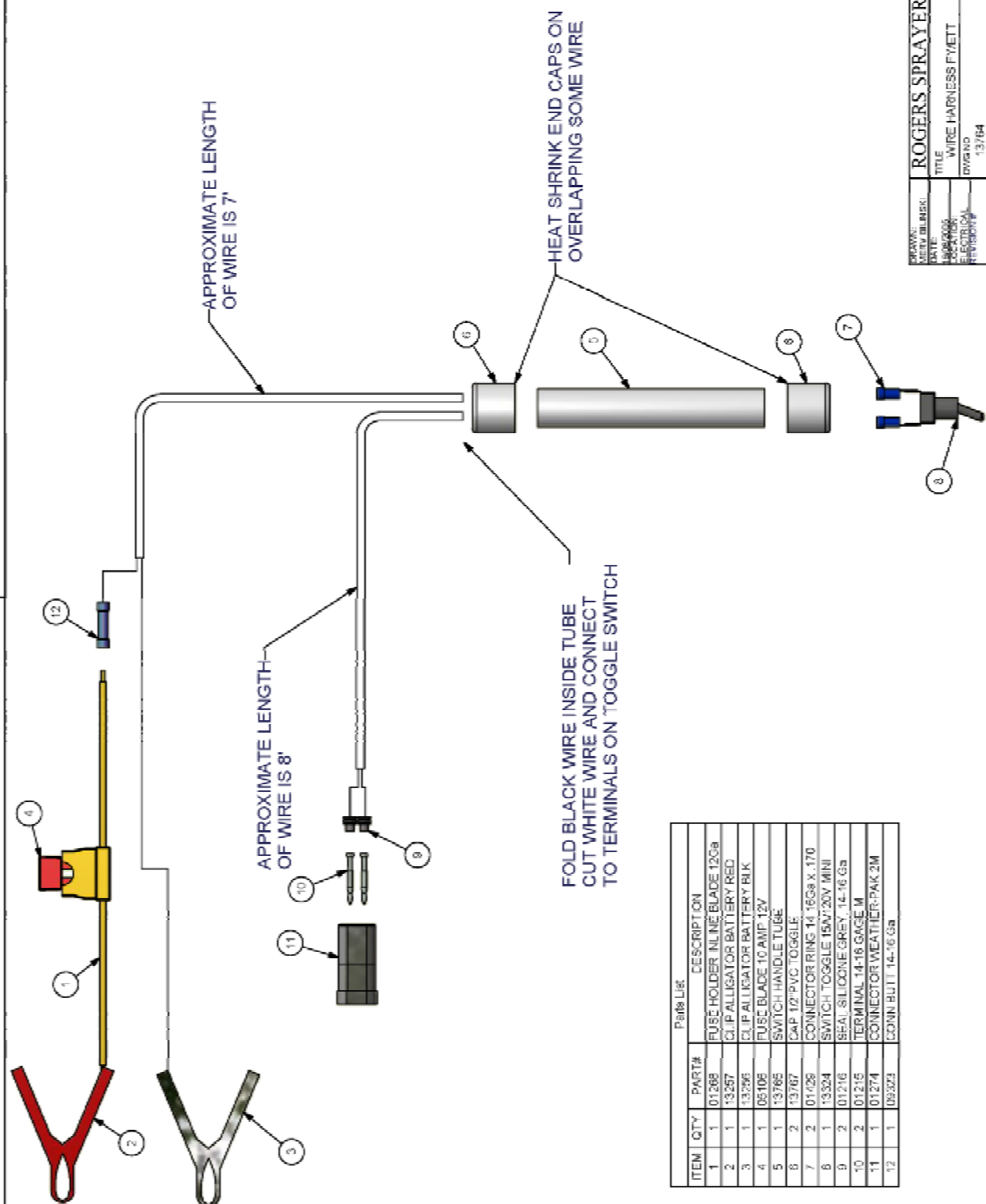
PARTS LIST		
ITEM	QTY	DESCRIPTION
1	1	00889 FLOWMONITOR ORC BODY
2	2	00906 FTG POLY ELB MORC x 1/2HB
3	4	11976a ORC CLIP A STYLE
4	4	11984 O-RING ORC
5	1	11989 ORC BALL RETAINER
6	1	11965 BALL FI GLASS 0.31-0.72 USGPM
7	1	01115 FTG POLY ELB ST MORC x FORC
8	1	14423 FTG WIL POLY CAP W-1/4FNPT
9	1	01281 PRESSURE GAUGE



PARTS LIST		
ITEM	QTY	DESCRIPTION
1	1	01118 BALL FI POLY 0.03-0.09 USGPM
2	1	01119 BALL FI POLY 0.05-0.18 USGPM
3	1	11990 BALL FI CELCON 0.09-0.3 USGPM
4	1	11965 BALL FI GLASS 0.31-0.72 USGPM
5	1	11991 BALL FI SS 1/2" 0.31-1.3 USGPM

DATE	13082025
REVISION	14881
SCALE	BEST FIT
SHEET	1
ROGERS SPRAYERS INC.	
TITLE FLOW KIT FY325425	
DWS NO	
MATERIAL	
SIZE	

## **Electrical Assembly**



Parts List			DESCRIPTION
ITEM	QTY	PART#	
1	1	01268	FUSE HOLDER INLINE BLADE 120a
2	1	13257	CLIP ALLIGATOR BATTERY RED
3	1	13266	CLIP ALLIGATOR BATTERY BLK
4	1	05108	FUSE BLADE 10 AMP 12V
5	1	13765	SWITCH HANDLE TUBE
8	2	13767	CAP 1/2" PVC TOGGLE
7	2	01028	CONNECTOR RING 14 16ga x .170
8	1	13324	SWITCH TOGGLE 15W/20V MINI
9	2	01216	SEA. SILICONE GREY 14- 16 Ga
10	2	01215	TERMINAL 14-16 GAGE M
11	1	01274	CONNECTOR WEATHERPAK 2M
12	1	05224	CONN BUILT 14-16 Ga

DRAWN BY: MARIUS B. BARK	ROGERS SPRAYERS INC.	
DATE: 10/1/84	TITLE: WIRE HARNESS FVETT	
APPROVED BY: J. C. BARK	BY: DWAND	
DATE: 10/1/84	DATE: 12/7/84	
REVISIONS:	SCALE: 1"=16"	
	MATERIAL: 304	
	SHEET: 1	



**Rogers Sprayers Inc. (RSI)**  
141 - 105<sup>th</sup> Street East  
Saskatoon, SK S7N 1Z2 Canada



Tel.: (306) 975-0500 or (888) 975-8294  
Fax: (306) 975-0499  
Email: [info@rogerssprayers.com](mailto:info@rogerssprayers.com)

## ROGERS SPRAYERS INC OWNER WARRANTY AGREEMENT

**Windfoil** Drift Containment Spray Systems (DCSS) are warranted to be free of factory defects under normal and intended use for a period of one (1) year from date of purchase to the original purchaser. Equipment must be setup in accordance with factory instructions and operated, maintained and used in accordance with the operator's manual. Equipment used for rental has a warranty period of forty five (45) days. Any customization or modifications to the original equipment voids warranty immediately.

RSI reserves the right not to warranty any items that are not directly manufactured by RSI. Such components need to be returned to the factory for inspection and tested by either RSI or the original manufacturer for defects. Examples of these parts include actuators, engines, pumps and electrical systems.

**All warranty Claims must be pre-authorized by the factory!**

To obtain warranty, all defective parts must be returned to the factory; in some cases, location of part might require only photo of defective part. RSI must be contacted to determine which route is required. RSI through its designated dealer or factory appointed representative will repair or replace, at its option, any or all parts that are proven to be defective free of charge.

RSI DOES NOT pay or reimburse for any travel time or investigation time to determine the defective part. Warranty labor will be based on the time required for RSI to replace only the part. Warranty labor rates and replacement times will be assessed yearly and will be included in a labor replacement sheet.

This warranty does not apply to damage caused by misuse, accident, acts of god, and/or operation without proper servicing. RSI will not be responsible for consequential damages; its liability is limited to replacement of parts.

Standard wear components (see list) such as belts, nozzles, screens, bearings, wheels, flow indicator bodies or flow indicator parts are only warranted for 30 days after original purchase.

RSI makes no other expressed, implied or statutory warranty; nor is anyone authorized to make any on our behalf.

**Complete your Warranty Registration online at [www.rogerssprayers.com](http://www.rogerssprayers.com)**

The warranty registration is found on the Contact page of our website. The warranty registration **MUST** be filled out completely and submitted to RSI to activate the warranty. If you would prefer, a printable copy is also available online.

**It is our intention to manufacture durable, user-friendly products. Any suggestions you have as to how we may improve our equipment are greatly appreciated.**





## Rogers Sprayers Inc.

141 - 105th Street East  
Saskatoon, SK S7N 1Z2  
Canada

Phone: (306) 975-0500

Fax: (306) 975-0499

Email: [info@rogerssprayers.com](mailto:info@rogerssprayers.com)

Web: [www.rogerssprayers.com](http://www.rogerssprayers.com)