

# NYLON CABLE CLAMPS



White Stock No.	Essentra No.	Black Stock No.	Essentra No.	Open Diameter	Typical Dimensions			
					A	B	C	D
<b>Light-Duty 3/8" - Width</b>								
---		25050	22CC37D0125B	1/8	0.125	0.115	0.325	3/8
25001	22CC37D0187	25051	22CC37D0187	3/16	0.187	0.172	0.378	3/8
25002	22CC37D0250	25052	22CC37D0250B	1/4	0.250	0.234	0.409	3/8
25003	22CC37D0312	25053	22CC37D0312B	5/16	0.312	0.279	0.441	3/8
25004	22CC37D0375	25054	22CC37D0375B	3/8	0.375	0.359	0.471	3/8
25005	22CC37D0437	25055	22CC37D0437B	7/16	0.437	0.422	0.519	3/8
25006	22CC37D0500	25056	22CC37D0500B	1/2	0.500	0.484	0.550	3/8
25007	22CC50D0125	25057	22CC50D0125B					
<b>Heavy-Duty 1/2" - Width</b>								
25008	22CC50D0187	25058	22CC50D0187B	3/16	0.187	0.172	0.423	1/2
25009	22CC50D0250	25059	22CC50D0250B	1/4	0.250	0.234	0.457	1/2
25010	22CC50D0312	25060	22CC50D0312B	5/16	0.312	0.297	0.498	1/2
25011	22CC50D0375	25061	22CC50D0375B	3/8	0.375	0.359	0.529	1/2
25012	22CC50D0437	25062	22CC50D0437B	7/16	0.437	0.422	0.560	1/2
25013	22CC50D0500	25063	22CC50D0500B	1/2	0.500	0.484	0.592	1/2
25014	22CC50D0562	25064	22CC50D0562B	9/16	0.563	0.547	0.623	1/2
25015	22CC50D0625	25065	22CC50D0625B	5/8	0.625	0.609	0.654	1/2
25016	22CC50D0687	25066	22CC50D0687B	11/16	0.687	0.672	0.752	1/2
25017	22CC50D0750	25067	22CC50D0750B	3/4	0.750	0.734	0.783	1/2
---	---	25068	22CC50D0812	13/16	0.812	0.797	0.814	1/2
25019	22CC50D0875	25069	22CC50D0875B	7/8	0.875	0.859	0.845	1/2
25020	22CC50D1000	25070	22CC50D1000B	1	1.000	0.984	0.908	1/2
25021	22CC50D1125	25073	22CC50D1250B	1 1/4	1.250	1.227	1.062	1/2
25025	22CC50D1500	25075	22CC50D1500B	1 1/2	1.500	1.477	1.187	1/2

All dimensions in inches

- High-quality nylon
- Molded in open position for easy assembly
- Beveled inner edges to prevent abrasion
- UV resistant



## Application

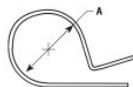
- Secure cable, tubing, wire, fiber optics



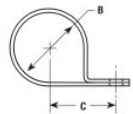
Stock No. 25025



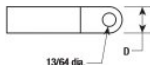
Stock No. 25006



Open position



Closed position



Stock No. 25067



Stock No. 25052